



Chainstitch

Otago Embroiderers' Guild Inc

April 2020

A message from our president, Mary Flaherty

It seems astounding for us to believe, that within a few weeks we are in lockdown, as a result of the Covid-19 virus and having to change our whole way of life. We can only be impressed with how our government has taken and continues to take every step to protect us all. How successful this will be is really in all our hands so please look after yourselves and follow all recommendations.

I read a beautiful article by Joe Bennett in yesterday's paper titled 'A soothing sight of ease and loveliness' – the later part referring to the albatross chick sitting in its nest on a cliff top watching other albatrosses responsive to the variable world. Looking out at Aramoana where memories lay of a deadly shooting and to the west the cranes, wharves and cargo ships of Port Chalmers. Still further west and just out of sight the city of Dunedin, now clamped down in a bid to thwart a modern plague.

None of this impinges on the chick.

It sits as chicks have done for millennia waiting to take to the air, feed, mate and rear chicks of its own. A bit like us all waiting and following advice until this pandemic runs its course.



Have a look at Auden's apocalyptic 'The Fall of Rome' over the next few days especially the last two stanzas:

Unendowed with wealth or pity,
Little birds with scarlet legs,
Sitting on their speckled eggs,
Eye each flu-infected city.

Altogether elsewhere, vast
Herds of reindeer move across
Miles and miles of golden moss
Silently and very fast

However, one of the positives from this event is that communication is available through various means especially the internet which has been very important for Kevin and I as our family live overseas. And I have learned to teach using Skype as all my students online theory exams are going ahead. I must say I have surprised myself at how easy it is to learn and how valuable it is for student and teacher.

The Guild committee have stepped up to provide you with interesting reading and embroidery ideas as we isolate in our bubbles for at least four weeks. My intentions are to try and complete at least one of the embroideries I am working on at present. No doubt you all have similar aspirations – Good Luck.

Don't hesitate to contact any of us, keep safe and look after yourselves and your loved ones.

COMMITTEE DETAILS

President	Mary Flaherty
Vice President	Sue Lucas
Immediate Past President	Brenda Burton
Secretary	Di Daly
Treasurer	Jane Carroll
Chainstitch	Aimee Richardson
Catering	Christine Cook
Library	Barbara Blake
Hostess	Colleen Bradley
Programme	Sue Lucas, and Jane Siddall
Treasure Chest	Pam Wilson
Website	Shelley Scoular

OEG CONTACT INFORMATION

Secretary email:	otago.guild@gmail.com
Website:	www.oeg.org.nz
Guild postal address:	Otago Embroiderers' Guild, PO Box 5732, Dunedin, 9058

MEETING AND MAY DAY CANCELLATIONS

All guild meetings, project meetings, and committee meetings are cancelled until further notice. May Day is also cancelled. It is the responsibility of each and every one to reduce the incidence of Covid-19 in our community. Be kind to one another, look after yourselves and call any of your committee if you feel alone and just want a chat.

The ANZEG 2020 Conference in Masterton has also been cancelled.

LOCKDOWN NOTICES AND CHALLENGES

Stitch from Your Stash Competition!

All going well we will have our exhibition at the end of the year and we usually have a raffle. One very popular raffle was our Christmas tree and decorations, so while we are in “lockdown” (or I like to think of as “compulsory stitch time”) we invite you to stitch a decoration from your stash to put on our raffle tree. There will be prizes for the most imaginative use of stash materials, cutest decoration, traditional decoration and the glitziest decoration.

Happy stitching!

Jane

Facebook Group

The OEG now has a Facebook page – this is a closed group so only OEG members can see the posts and comments. It has been set up to help us keep in contact with other OEG members, show what we are working on / finishes, lament that my puppy ate my silk thread, and ask questions/ seek help etc. If you wish to be part of the group search for OEG Private Group and ask to join. As it is a private group you will be asked a question and need to be approved. At the time of writing this we have 29 members in the group and have just had our WIPON (work in progress on Wednesday) sharing opportunity.

Jane.



Free Patterns

On the last pages of the newsletter there is a cute little Easter themed piece, the other to remind us of our current needs, these are free stitcheries produced by designers to get us through self isolation

Also, if you want any more free little stitchables go to Instagram and search: *Be Well*.

About 50 designers have released little charts that are free and fall under this category whilst we are in Isolation. Plenty to keep us all busy.

Never fear, the *80 Stitches Around the World* people, your patterns are safe with me and I will have them up to date for you for the next time we are allowed to meet.

Sue.

SUBSCRIPTIONS FOR 2020

You can now pay subs for 2020. If you have not yet paid, please do so as soon as you are able to. The committee has decided to keep the subscription fee at \$55 given that we are not able to have meetings as usual. The different membership options and prices are described below:

- Full annual membership: \$60 (reduced to \$55 if paid by 31 March 2020)
- Country Membership: \$45 (\$40 if paid by 31 March 2020)
- Associate Membership: \$30. This category is for members of other guilds. Please state the name of your Guild on form.
- Student membership: \$20 if aged between 13-18 years; \$2 per session if aged between 5-12 years.

Payment methods:

- Cheque: made out to 'Otago Embroiderers' Guild'
 - Please hand to Jane at a Guild meeting; in an envelope with your name on the outside
 - Or you can post your cheque to:
The Treasurer
Otago Embroiderers' Guild
PO Box 5732, Dunedin 9058.
- Online: into bank account 03 1732 0001345 00
Payee: Otago Embroiderers' Guild
Particular: YOUR NAME
Code: subs
Reference: membership type (e.g. full, country, associate, student)

NOTICES

- **For sale:** I have a floor standing slate frame for working tapestries or similar projects. Size 43cm / 36 cm (17 inches / 14 inches). It's looking for a home! If you could use it, please ring Shirley Hudson on 4535 041 and I will get it to you when the lockdown is over.
- **Web Embroidery List:** Keep an eye on your emails! Shelley Scoular has been making a list of websites that are related to embroidery. She is regularly sending out a few websites to check out. Thanks for all of your hard work in finding these Shelley. Feel free to send through any of your personal favourites and Shelley can add them to her list.

INTRODUCTION TO NEW COMMITTEE MEMBERS

There are five new members on the committee this year. There is an introduction to one of our new committee members below, with one more introduction to follow in the coming months.

Hi – I am Colleen Bradley and I joined the OEG in 2019 after the University Bookshop display caught my eye. I have also recently accepted a position on the OEG Committee and am looking forward to slowly getting to know other members.



I am married to Wayne and we have two children, one son-in-law, and one grandson, Axel, pictured here with me. We are to be blessed with number two grandchild in the imminent future and we are very excited to meet him/her. I work at the University of Otago in administration in various departments. I thoroughly enjoy the student contact and working on such a beautiful Campus.

Someone asked me recently how long I had been stitching. I had to pause and think, and then I did a quick mental walk around my house and realised I have been crafting in some form or other virtually all my life, starting with making my dolls clothes aged about eight. My mentor was my Mum and if something went wrong she was the saint with patience that helped me out, though somethings did end up in the bin! My craft skills range from sewing, knitting, crocheting, quilting, applique and of course embroidery. I'll give anything a go. I recently bought the book Botanica by Julie Kniedl and have to say I am enthralled with it. I think the Fig will be my first project! Last year I was inspired by the Inspirations magazine with the mistletoe on the bell on the cover and I managed to replicate it even finding the exact same bell. I am very proud of it and myself as I've not done raised embroidery for a number of years. I guess it's like riding a bike, you never forget.

OEG EXHIBITION 2020 PRESIDENT'S CHALLENGE

The Power of Poetry

Embroider a line or lines from a published poet and then embroider your interpretation to represent the imagery in the lines. The piece must be titled – An extract from (title of the poem) by (poet). This can be presented in different ways to fit within a 5-inch (13cm) by 8-inch (20cm) radius. It can be much smaller provided it fits within the measurements provided. It could be a plaque, or a needle case, or a small box or a little book. That is entirely your choice.

For example, an extract from 'Hunger' by Laurence Binyon

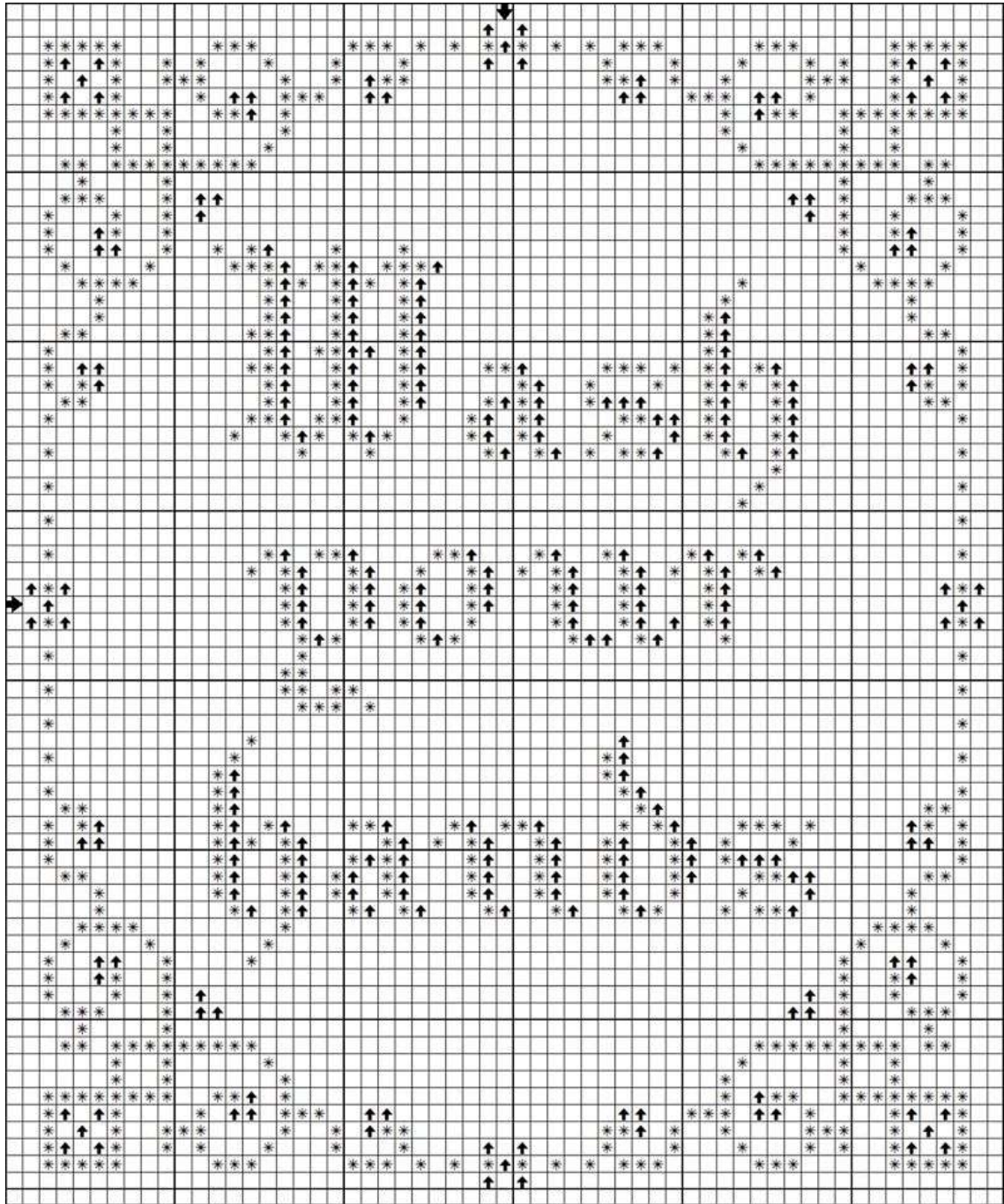
“I am Hunger”

Embroider examples of physical, mental or spiritual hunger. Or, an extract from 'To Autumn' by John Keats

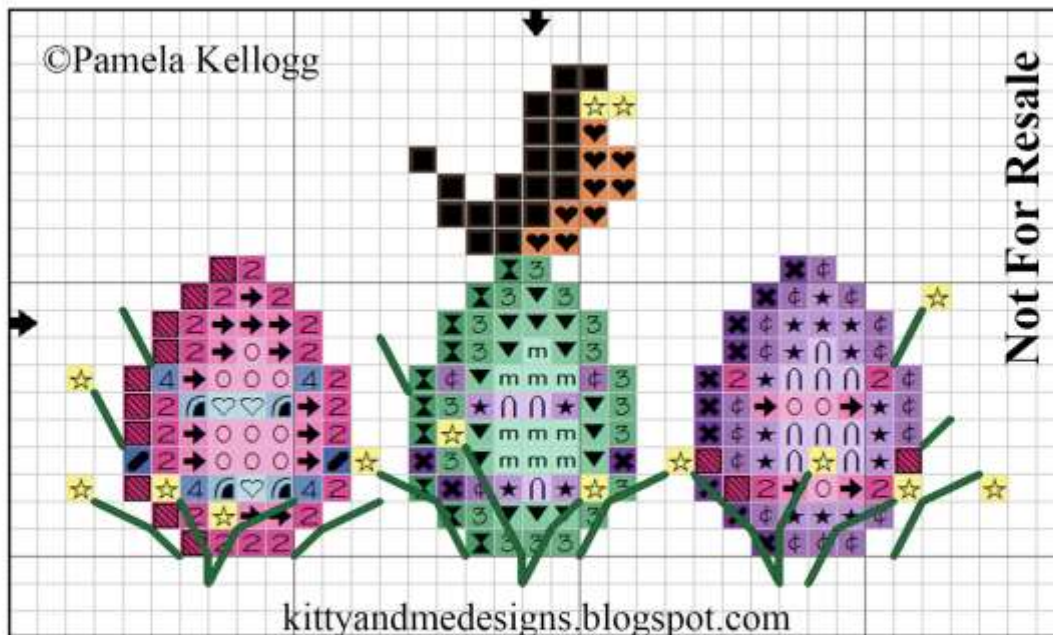
“Seasons of mist and mellow fruitfulness
Close bosom friend of the maturing sun”

Embroider images of autumn literally or figuratively.

Children's poetry, humorous poetry and NZ poetry are wonderful sources of inspiration.



Easter Egg Robin



Stitch Count: 37 stitches wide X 23 stitches high

Full & Quarter Stitches

X	1/4	DMC	Anchor	Color
■		801	861	Coffee Brown-DK
♥		722	307	Orange Spice-LT
○		605	51	Cranberry-VY LT
➔		604	86	Cranberry-LT
2		603	87	Cranberry
■		602	88	Cranberry-MD
♡		162	129	Blue-UL VY LT
⌣		827	140	Blue-VY LT
4		813	977	Blue-LT
■		826	139	Blue-MD
⊗		912	230	Emerald Green-LT
3		913	209	Nile Green-MD
▼		954	204	Nile Green
m		955	433	Nile Green-LT
∩		211	121	Lavender-LT
★		210	109	Lavender-MD
⊕		209	118	Lavender-DK
⊗		208	177	Lavender-VY DK
☆		727	302	Topaz-VY LT

Back Stitches

	DMC	Anchor	Color
—	910	189	Emerald Green-DK

Kitty Me Designs